

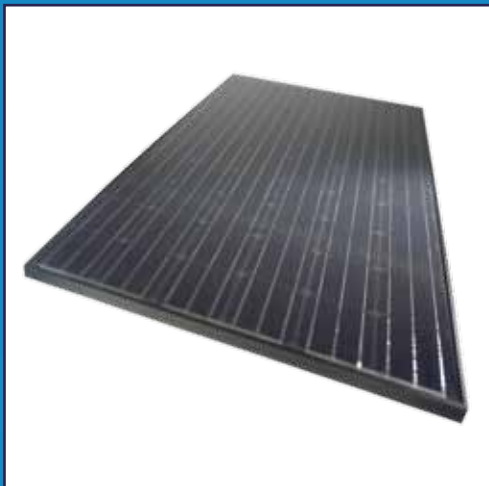


# PV-Shop



## Product Catalogue

Photovoltaic Panels, Inverters and Kits by PV-Shop.co.uk



# Company

## UK Solar Provider's focused approach

- **Solar Focus**

UK Solar Provider is specialised in photovoltaic systems – our experience includes thousands of Kilo Watts in Germany, Austria, Canada and the UK.

- **Customer Focus**

UK Solar Provider has staff with over ten years of combined experience in the world's largest solar market, so we know what the fair price of every component should be and we pass this knowledge and savings on to our customers.

- **Quality Focus**

UK Solar Provider's philosophy is to offer the highest quality panels for the best possible price. All the products we use are bought directly from the producers and are guaranteed to last over 25 years (much longer than your Fit or Micro-fit contract).

Here at the photovoltaic shop our main aim is to give our customers top-quality solar power products at the most competitive prices, giving you photovoltaic (PV) components that will harness the sun's energy for your everyday needs.

We import our products directly from proven and established companies, cutting out the middle man between you and quality components. We're also heavily experienced in project design, so we can ably assist you throughout the process of installing your solar energy system, and we know the products well enough to make your transition to solar energy a smooth one.

Not only can we provide with these products, but we can also assist you with your project's design, installing your solar energy system to helping you with all the planning and projections of your project.



**PV-Shop**

Take a further look into our online PV-shop to see all of our products and how they can steer you to a brighter future.

**[www.pv-shop.co.uk](http://www.pv-shop.co.uk)**

10 years of experience  
together with **aleo** we build perfect kits  
**the very best systems and design**

# PV Kit Information

- **PV kit comes as one pallet with all components**
- **Free delivery to your doorstep**
- **Great components - MCS licensed**
- **All you need to build the best system for the customer**
- **Solar panels come with a 10 year product guarantee and 25 year performance guarantee.**
- **Our Kits have a performance ratio of up to 14.7% and can produce 1,062 kWh/kWp per year (in Southampton).**

Our PV kits have everything you need to implement a quality solar energy system with all the components being MCS accredited. The solar panel kit contains Aleo solar panels, an SMA Inverter, the Renu-sol Mounting System and all the correct wiring and connectors. It is easy to install and has an outstanding performance ratio. Our components are all German branded, proven to not only be of the highest quality, but also used extensively in a prominent renewable energy market like Germany for several years, giving proven reliability and experience.



**MCS licensed**

Certification Mark for Onsite Sustainable Energy Technologies

Including  
**free delivery**  
to your doorstep  
throughout UK!

# aleo Solar Panels

Aleo solar panels are the best in German quality with award winning performances. With a 10 year product warranty and a 25 year performance warranty, it's a solar panel you can rely on. Each module delivers extraordinary performance and high yields, with the front panel consisting of heat-strengthened glass.

This ensures protection of the cells against bad weather conditions and gives maximum light permeability along with a frame consisting of non-corrosive aluminium alloy you will always find reliability in Aleo solar panels. The solar modules can be easily connected using the pre-assembled plugs, with the connection sockets bypassing diodes which prevent overheating.

Whether you want polycrystalline or monocrystalline, framed or laminates, larger modules or the normal sizes, we can provide all of these from Aleo to suit your needs.



- Award winning German quality
- 10 year product guarantee
- 25 year performance guarantee
- Tested by standards authorities VDE, in compliance with protection class II
- Certified in accordance with IEC 61215 international requirements
- Positive power classification

## aleo Power Classes

### 240W (Polycrystalline) - S 18 240W

Electrical data (STC)			S18.240
Rated power	$P_{MPP}$	(W)	240
Rated voltage	$U_{MPP}$	(V)	29.5
Rated current	$I_{MPP}$	(A)	8.13
Open-circuit voltage	$U_{OC}$	(V)	37.0
Short-circuit current	$I_{SC}$	(A)	8.65
Efficiency	$\eta$	(%)	14.6
Area-to-power ratio	$A_p$	( $m^2/kW_p$ )	6.85

### 245 W (Monocrystalline) - S19 245W

Electrical data (STC)			S19.245
Rated power	$P_{MPP}$	(W)	245
Rated voltage	$U_{MPP}$	(V)	31.3
Rated current	$I_{MPP}$	(A)	7.84
Open-circuit voltage	$U_{OC}$	(V)	37.1
Short-circuit current	$I_{SC}$	(A)	8.48
Efficiency	$\eta$	(%)	14.9
Area-to-power ratio	$A_p$	( $m^2/kW_p$ )	6.71

### Basic data for both panels S 18 / S 19

Basic data		
Length x width x height	( $mm^3$ )	1660x990x50
Weight	(kg)	21
Number of cells		60
Cell size	( $mm^2$ )	156x156
Cell material		Cristalline Si
Front sheet		Solar glass (TSG)
Back sheet		Polymer
Frame material		Al alloy
Cable length	(mm)	1200 (+), (800 (-))
Connectors		MC3 class
IP class		IP65
Bypass diodes		3

Please visit [www.pv-shop.co.uk](http://www.pv-shop.co.uk) for the latest panel prices.

Inverters are proven to be highly efficient, safe, flexible and also simple to use. Their purpose is to convert the direct current generated by the solar module into grid-acceptable alternating current. With this in mind, you could think of the Inverter as the 'heart' of your solar energy system.

SMA is the leading brand for solar inverters with efficiencies of up to 98% and new technology ensuring maximum yields and the highest customer satisfaction.

We offer you the right device for each application, devices that include Sunny Boy, Sunny Mini Central and Sunny Tripower. So from grid-connection and feeding into stand-alone grids, to small house systems and commercial systems, we'll provide the right device for your needs.

## Power Classes

Inverter Typ	Power/Voltage	Price excl. VAT
SMA Inverter SB1200	Max. DC power = 1320 W Max. DC voltage = 400 V Max. AC apparent power = 1200 VA	<b>£558.00</b>
SMA Inverter SB1700	Max. DC power = 1850 W Max. DC voltage = 400 V Max. AC apparent power = 1700 VA	<b>£662.78</b>
SMA Inverter SB2000HF	Max. DC power = 2100 W Max. DC voltage = 700 V Max. AC apparent power = 2000 VA	<b>£883.50</b>
SMA Inverter SB2500HF	Max. DC power = 2600 W Max. DC voltage = 700 V Max. AC apparent power = 2500 VA	<b>£946.74</b>
SMA Inverter SB3000TL	Max. DC power = 3200 W Max. DC voltage = 550 V Max. AC apparent power = 3000 VA	<b>£1.085.00</b>
SMA Inverter SB4000TL	Max. DC power = 3200 W Max. DC voltage = 500 V Max. AC apparent power = 4000 VA	<b>£1.333.00</b>
SMA Inverter SB3300	Max. DC power = 3820 W Max. DC voltage = 550 V Max. AC apparent power = 3600 VA	<b>£1.072.60</b>
SMA Inverter STP10000	Max. DC power = 10200 W Max. DC voltage = 1000 V Max. AC apparent power = 10000 VA	<b>£2.606.08</b>
SMA Inverter STP15000	Max. DC power = 15340 W Max. DC voltage = 1000 V Max. AC apparent power = 15000 VA	<b>£3.192.32</b>
SMA Inverter STP17000	Max. DC power = 17410 W Max. DC voltage = 1000 V Max. AC apparent power = 17000 VA	<b>£3.322.24</b>

### Sunny Boy 2500HF



**Sunny Tripower 10000**



**Sunny Boy 1200**



**Sunny Boy 3300**

# Monitoring and Mounting Systems

Using the webbox system you can monitor the productivity and efficiency of your solar energy system 24/7. Through the web, email, fax, or text message, you can be kept up to date with this.



## SUNNY WEBBOX

- Remote monitoring, diagnosis and configuration of the solar power plant from anywhere in the world
- Quick detection of malfunctions and notification in case of a failure via e-mail or text message\*
- Powerful data logger for documentation of all important plant data
- Easy remote access via the web browser
- Including free standard access for Sunny Portal for the entire service life of the plant
- Flexible display, evaluation, yield and event reports via Sunny Portal
- \*optional with existing GSM modem

## SUNNY WEBBOX with Bluetooth Wireless Technology

- Remote monitoring, diagnosis and configuration of the PV plant
- Data logger for all key plant data
- Rapid detection of operational failures
- Automatic monitoring of up to 50 inverters via SMA Bluetooth®
- Fast set-up thanks to Sunny WebBox Assistant and quick reference guide
- Wireless connection to the Sunny SensorBox also possible
- Including free standard access for Sunny Portal for the entire service life of the plant
- Easier data evaluation due to FTP push function – even in CSV format



Please visit [www.pv-shop.co.uk](http://www.pv-shop.co.uk) for the latest panel prices!



## VarioSole SE mounting system

This system, which is also available in black, allows for the fast and easy assembly of PV-modules onto any roof. It's height-adjustable it's possible to install with cross rail connectors, even on uneven roofing this mounting system enables perfect PV instalment.

- Mostly pre-assembled components for easy and reliable installation
- Components are made of high-grade aluminium and stainless steel
- 10 years guarantee of component durability
- No removing of roofing required

# Product Kit Information

	Solar Panel	Inverter		Price (exc VAT)	£/kWp
6 Solar Panel Kit (245W Aleo S19) 1.47 kWp	Monocrystalline ×6	SB1200 ×1	Roof Mounting	£3124.00	2.12
8 Solar Panel Kit (245W Aleo S19) 1.96 kWp	Monocrystalline ×8	SB2000HF ×	Vario Sole SE ×1	£4212.00	2.15
10 Solar Panel Kit (245W Aleo S19) 2.35 kWp	Monocrystalline ×10	SB2500HF ×	Female Connector	£5146.00	2.19
12 Solar Panel Kit (245W Aleo S19) 2.94 kWp	Monocrystalline ×12	SB3000TL×1	HIK Plug socket	£5924.00	2.01
16 Solar Panel Kit (220W Aleo S18) 3.52 kWp	Polycrystalline ×16	SB3000TL ×	Male Connector	£7336.74	\$2 8
16 Solar Panel Kit (245W Aleo S19) 3.92 kWp	Monocrystalline ×16	SB4000TL ×1	HIK Connection plug	£7777.00	1.98
18 Solar Panel Kit (220W Aleo S18) 3.96 kWp	Polycrystalline ×18	SB3300 ×1	DC Solar Cable	£7880.04	1.99
			4.0mm <sup>2</sup> , ring @ 100m DC ×1		

Below you will find what dimensions are needed for each solar kit in order to mount on a roof.

	Portrait		Landscape	
6 Solar Panel Kit	2×3 3.38m × 3.06m		3×2 3.06m × 3.38m	
8 Solar Panel Kit	2×4 3.38m × 4.08m		4×2 4.08m × 3.38m	
10 Solar Panel Kit	2×5 3.38m × 5.1m		5×2 5.1m × 3.38m	
12 Solar Panel Kit	2×6 3.38m × 6.12m	3×4 5.07m × 4.08m	6×2 6.12m × 3.38m	4×3 4.08m × 5.07m
16 Solar Panel Kit	2×8 3.38m × 8.16m	4×4 6.76m × 4.08m	8×2 8.16m × 3.38m	4×4 4.08m × 6.76m
18 Solar Panel Kit	2×9 3.38m × 9.18m	3×6 5.07m × 6.12m	9×2 9.18m × 3.38m	6×3 6.12m × 5.07m



## PV-Shop

Take a further look into our online PV-shop to see all of our products and how they can steer you to a brighter future.

[www.pv-shop.co.uk](http://www.pv-shop.co.uk)

Including  
**free delivery**  
to your doorstep  
throughout UK!



**UK Solar Provider Ltd**

9 Valley Court, Lower Road, Croydon near Royston,  
Hertfordshire, SG8 0HF  
info@pv-shop.co.uk - [www.pv-shop.co.uk](http://www.pv-shop.co.uk)  
phone 01223 208 307